

DuoChair

5 star base



Design story



An innovative chair, aesthetically a winner and yet extremely simple, very comfortable and responsible in its use of materials: the new DuoChair is ICF's most efficient and effective combination of materials and design ever achieved in a task chair. The new DuoChair is designed for those who want a highly ergonomic product, but are not satisfied with purely functional elements. Those looking for well-being, comfort, and elegance. Not only: it must adapt to a flexible office space and be environmentally friendly.

DuoChair is the epitome of lightness: in the design, in research centred on materials, and in the creation of structural elements. This very lightness makes it a passepartout product that possesses all it needs for functional and comfortable use without the addition of superfluous elements, an item that ideally blends into the office without standing out.

Specifications



1 Supporting structure: The rear structure in die-cast aluminum ensures maximum torsional strength, supports the backrest shell, fixes the armrests and transmits the movement geometry to the backrest and seat. Available in three different finishes: polished, chromed or painted.

2 Backrest in mesh: Frame with techno-polymer structure upholstered with a load-bearing and flexible mesh. 3D mesh sheet (single-colour - 100% polyester) or in elastic mesh (two-toned effect - 70% polyester elastomer, 30% polyester). The mesh sheet ensures full breathability and thorough air circulation.

3 Backrest in fabric: Frame with techno-polymer structure upholstered in fabric or leather. The sheet is suspended in order to distribute the body weight optimally. The leather covering includes an eco-leather back with predetermined colour combinations.

4 Soft backrest: The frame is entirely covered in fabric or leather to increase the feeling of comfort while maintaining the characteristics of breathability and elasticity.

5 Seat cushion: Seat cushion in cold moulded polyurethane foam, thickness 55 mm, with structural insert in poly-propylene. Upholstered in fabric or leather. The foam is approved in class 11M and complies with all safety and comfort standards.

6 Armrests: 3D armrests are adjustable in height, depth and width. The support pads of the armrests are made of integral polyurethane. The armrest support is made of black plastic material.

7 Depth of the seat: The seat depth adjustment is easily activated in seated position by means of an intuitive lever with 7,5 cm adjustment range.

8 Height adjustment: Seat height can be adjusted a maximum of 10,5 cm with a lever. The gaslift complies to EN16955:2017.

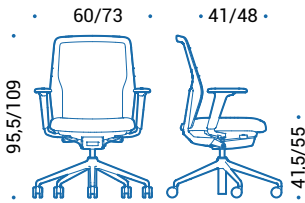
9 Height adjustment of backrest: Backrest height can be adjusted with a lever with 6,5 cm adjustment range.

10 Synchronised auto-fit tilting mechanism: Synchronized mechanism with "auto-fit" system for automatic adjustment of the backrest resistance based on the weight of the user. Additional knob for the comfort tension adjustment according to individual preferences. Optional forward adjustment.

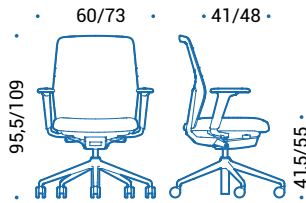
11 Base: Five star base made of die-cast aluminum, with a polished, chromed or painted finish depending on the structure or polyamide dyed in black.

12 Castors: In black plastic with soft running surface for use on any type of flooring and a load depending safety brake complies to EN 12529:2001. Diam. 65 mm.

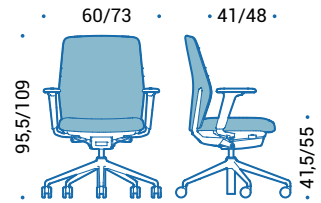
Dimensions



DCE.413 | swivel chair, seat height adjustable, backrest height adjustable, seat depth adjustable, auto-balance synchro tilting mechanism, 3D adjustable armrests



DCE.423 | swivel chair, seat height adjustable, backrest height adjustable, seat depth adjustable, auto-balance synchro tilting mechanism, 3D adjustable armrests



DCE.433 | swivel chair, seat height adjustable, backrest height adjustable, seat depth adjustable, auto-balance synchro tilting mechanism, 3D adjustable armrests

Colours and finishes

Structure, base and frame

Aluminium



47 | Polished



55 | Chromed

Painted aluminium



115 | Black



095 | Grey

Plastic material



115 | Black



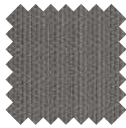
095 | Grey

Upholstery

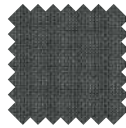
Fabric



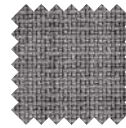
Cat. B | Atlantic
(14 colours)



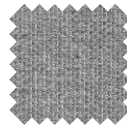
Cat. B | Mini
(7 colours)



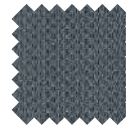
Cat. C | Cura
(8 colours)



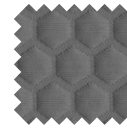
Cat. C | Fame
(7 colours)



Cat. C | Mini Melange
(9 colours)



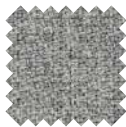
Cat. C | Sealife
(11 colours)



Cat. C | Spazio
(4 colours)



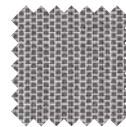
Cat. C | Step
(8 colours)



Cat. C | Step Melange
(8 colours)

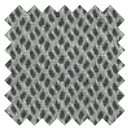


Cat. C | Sotega
(10 colours)

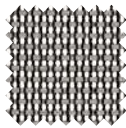


Cat. C | Swing
(13 colours)

Mesh



Cat. X | Rhythm
(9 colours)



Cat. X | Elastic Mesh
(7 colours)

Leather



Cat. E | Leather
(18 colours)



—
icf-office.it
■

ICF